

21.5" PANEL MOUNT LCD MONITOR (QUICKSHIP)

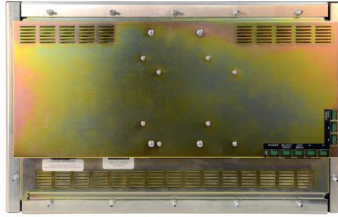
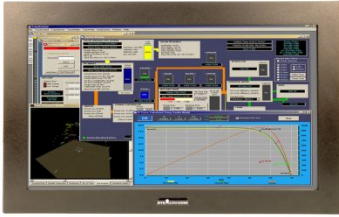


Model: SV-2150WS-PM

- Panel Mount 21.5" Widescreen LCD Monitor
 - NEMA 4/IP65 Environmentally Sealed
 - Touch Screen Standard (Resistive)
 - 16:9 Aspect Ratio
 - 1920 x 1080 Maximum Resolution
 - 250 Nits of Brightness, Adjustable Controls
 - VGA, DVI-D, Displayport & HDMI connectors
 - Wide Viewing Angles, 178°
 - Stainless Steel & Custom painted bezel options
- Turn this display into a PanelPC with mountable & removable LittlePC
 - cULus Listed
 - 3 Year Warranty



GALLERY IMAGES



PRODUCT DESCRIPTION

Stealth's 21.5" Panel Mount LCD features a widescreen display and is easily integrated into your enclosure, cabinet, console, wall, kiosks or other industrial applications. Simply refer to the Panel Mount cutout drawing and cut a hole to the size indicated. Drop the LCD in place and secure the brackets for each side. No stud mount holes are required for this LCD monitor.

All Stealth Panel Mount LCD products come standard with an environmentally sealed NEMA 4, 4X, IP65 front panel that is resistant to dust/dirt penetration or even liquid splashes. The rugged SV-2150WS-PM LCD display comes equipped with resistive touchscreen standard.



Prior to shipping, each and every display is put through Stealth's rigorous QA burn-in procedure that is documented and controlled through our ISO 9001 quality system and in compliance with being cULus Listed, UL 60950-1 & CAN/CSA C22.2 No. 60950-1-07.

Stealth offers a wide range of LCD product offerings that include Panel mount, Rack mount and Open Frame designs as standard off-the-shelf products in 8.4" up to 24" diagonal sizes. Our LCD products are constructed from solid steel and will meet the demands of your application without breaking your budget.

ADDITIONAL INFORMATION

| | |
|-------------------------------|---|
| Bezel Type | Panel Mount |
| Screen Size | 21.5" (Diagonal) |
| Aspect Ratio | 16:9 |
| Native Resolution | 1920 x 1080 (Auto sync from 640 x 480 to 1920 x 1080) |
| Horizontal Frequency | 31.5 kHz ~ 83 kHz |
| Vertical Frequency | 56 Hz ~ 75 Hz |
| Pixel Pitch | 0.25mm x 0.25mm |
| Response Time | 6ms Typical |
| Type | IPS LCD Panel c/w LED Backlighting |
| Video Input Connectors | VGA / HD-15 DVI Compliant Digital HDCP (DVI-D) HDMI Displayport |
| Viewing Angle | 178° / 178° (H / V) - (Viewing angle of LCD panel sans touch) |
| Contrast Ratio | 1000:1 (typical) 25000:1 (dynamic) |
| Luminance (Brightness) | 250 cd/m2 typical at center (250 Nits) |
| Viewable Image Size | Horizontal: 18.85" / 478.79 mm, Vertical: 10.68" / 271.27 mm |
| Video Signal | ANALOG: 0.7 Vp-p/75 Ohms |
| Sync Signal | Separate Sync: TTL Level (Positive/Negative) Composite Sync on Green: (0.3Vp-p negative 0.7Vp-p positive) Composite Sync: TTL Level (Positive/Negative) |
| Environmental Rating | Standard Bezel: NEMA 4 / IP65 Front Panel (when properly installed) protection against windblown dust and rain, splashing water, and hose-directed water Optional Stainless Steel Bezel: NEMA 4X / IP65 Front Panel (when properly installed) corrosion protection, protection against windblown dust and rain, splashing water, and hose-directed water |

| | |
|---------------------------------------|---|
| Environmental | Operating Temperature: 0 - 40C (32 to 104 F) Storage Temperature: -10 - 60C (14 to 140 F) Operating: Humidity 20% ~ 80%, non-condensing Storage Humidity: 10% to 85%, non-condensing |
| Approvals | cULus Listed, UL 60950-1 & CAN/CSA C22.2 No. 60950-1-07 |
| Input | AC Input: 100 - 240VAC ~ 50-60Hz, 1.3A |
| Control Buttons (Rear mounted) | Left (-), Right (+), Up, Down, Menu/Exit Reset/Eco, Input/Select, Power ON/OFF |
| Controls On-Screen Display | Brightness, Contrast, Auto Adjust, Image Position, Image Adjust, Color Adjust, Display Mode, Language Select, OSM Lockout, OSM Time-out |
| Panel Finish | Black Baked Enamel (Standard) Stainless Steel - Brushed #304 (Optional) |
| Unit Weight | 20 Pounds (9.07Kg) |
| Dimensions | Panel Mount: 21.95"(W) x 13.8"(H) x 2.8"(D) 557.53mm x 350.52mm x 71.1mm |
| Available Models | SV-2150WS-PM-RT - Standard Bezel (NEMA 4), Resistive Touch with Serial/DB9 and USB Interface |
| Warranty | 3 Year Parts and Labor |
| Disclaimer | Note: Specifications are subject to change without notice. |