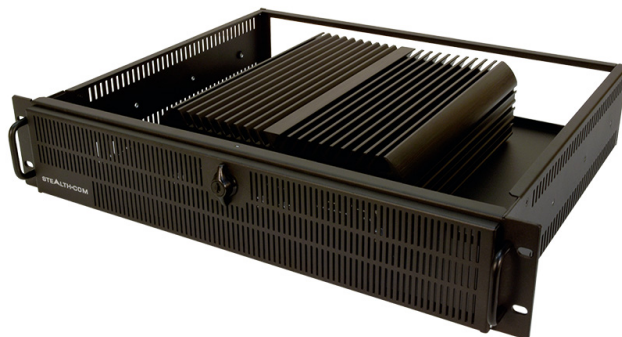


SR-2870 - POWERFUL FANLESS 2U RACKMOUNT SERVER/PC



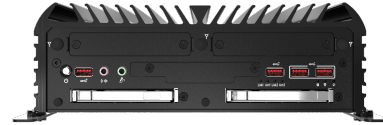
\$3,400.00 USD

Powerful & Versatile Fanless Rack PC

- Fanless, Noise Free Computing
- Space Saving 2U, 3.5" Rack Server/PC
- Powerful Intel's® 10th Generation Core i5, i7, i9 & Xeon mobile processors
 - 8x DIO (Digital input/output) ports
 - Dual Removable Front Drives
- Wide Range 9-48 VDC Input, ideal for mobile/field
- Built-in Gigabit LAN, USB 3.2, Audio, Serial, Video (DVI-I & Display port)
 - 4K Resolution, Ultra HD, Triple Display support
 - Single/Dual channel CAN Bus (Optional)
 - Solid State Drives (SSD) Standard
 - Windows 10, 11 and Linux
 - UL, CE, FCC & RoHS Certified
 - See our FAQ - Why Choose Fanless?
- Small Form Factor model version also available



GALLERY IMAGES



PRODUCT DESCRIPTION

The Stealth model SR-2870 is a powerful fanless 2U Rackmount Server/PC that is easily integrated into standard 19" rack cabinets or used as standalone workstations. It is our latest in innovative Fanless 2U Rackmount Computers/Servers.

The SR-2870 is designed for high performance and is well equipped with Intel's® 10th Generation Core i5, i7, i9 and Xeon mobile processors. Up to 64GB of ECC and non-ECC DDR4 RAM is supported, along with capacity of up to 24TB in solid state drives (SSD) when equipped with 3 drives.

The SR-2870 rack mount computer includes two Removable Front Drive Bays, providing easy drive swapping and optional RAID configurations. The powerful small form factor pc also includes an abundance of I/O ports such as USB 3.2 ports, RS232 COM ports, Gigabit networking, external SIM card sockets for wireless connectivity and audio/video ports.

Stealth's SR-2870 rack pc is designed to handle 4K Ultra HD Resolution video and can support up to three connected displays via DisplayPort and DVI-I video ports. The SR-2870 also features 8x DIO (Digital input/output) with Isolation, offering the advantage of providing electrical isolation of digital signals.

Stealth developed the SR-2870 to be more than just your average server. It is engineered to be extremely mobile application friendly with the inclusion of Wide Range 9-48 VDC power input and to protect the system power is regulated with OVP (Over Voltage Protection), OCP (Over Current Protection) & Reverse Protection.

The SR-2870 is UL, CE, FCC & RoHS certified, and designed for use in a multitude of applications including; Audio/Video recording, Embedded Control, Digital Signs, Interactive Kiosks, Thin-Clients, and Human/Machine Interface.

ADDITIONAL INFORMATION

Processor	Supporting Intel® Core™ 10th Generation Processors Intel® Core™ i5-10500TE (6 Cores / 12 Threads, up to 3.7Ghz) Intel® Core™ i7-10700TE (8 Cores / 16 Threads, up to 4.4Ghz) Intel® Core™ i9-10900TE (10 Cores / 20 Threads, up to 4.5Ghz) Intel® Xeon® W-1290TE (10 Cores / 20 Threads, up to 4.50Ghz)
BIOS	AMI 256Mbit SPI BIOS
Chipset	Intel® W480E Chipset
Memory	2x DDR4 Memory Sockets Supporting up to 64GB of RAM / Memory Optional ECC Memory Support (available for Xeon CPUs only)
Internal Storage	480GB 3D NAND SSD (Solid State Drive) standard (SATA) Options of up to 8TB SSD internal storage. Up to 3 x 2.5" SSD supported total (1 x internal, 2 x removable) Optional Onboard RAID configurations (0, 1, 5), requires multiple drives
Internal Expansion Option	2 Internal full sized Mini-PCIe expansion slots
Video	Intel® UHD Graphics 630 Includes DVI-I & 2x DisplayPort video ports Supports 4K Ultra HD Resolution as well as 1080p HD Video Triple Display support with DisplayPort and DVI-I Max Resolution, DisplayPort Mode: 4096x2304 @ 60Hz, DVI Mode: 1920 x 1200 @ 60Hz
Networking	LAN1: Intel I219, LAN2: Intel I210 Optional 2/4 x 10G Network connections on Front Panel Optional 4/8 x 10/100/1000 RJ45 POE Network connections on Front Panel 2 onboard Gigabit Ethernet controllers, RJ-45 interface, PXE and WOL Supported Optional 802.11 b/g/n/ac Dual Band (2.4Ghz / 5Ghz) Wireless Networking and Bluetooth 4.0, Realtek® RTL8821AE via internal Mini-PCIe

	2x External SIM card sockets standard for 4G wireless connectivity Optional 2x External SIM card sockets in Front Bay for 5G wireless connectivity
Communications	4x RS232/422/485 COM ports (standard) Additional 2/4 RS232 COM ports on Front Panel (optional) Optional 4/8 x USB 3.0 Ports on Front Panel Single/Dual channel CAN Bus (optional)
Audio	Integrated Realtek High Definition Audio CODEC ALC888S
	Windows Server 2022 Windows 11 (64-bit) Windows 10 (64-bit) Ubuntu Linux
Operating Systems	Please contact us directly for any special requirements
TPM Module	TPM 2.0 (Trusted Platform Module), provides increased hardware security.
WatchDog Timer	1 ~ 255 sec/min System Reset
Hardware Monitor	Processor temperature Voltage
	2U, 3.5" High, 19" EIA rackmount Solid Steel Chassis, Black Color Locking / Latching Secure Front door Fanless Rugged Aluminum Chassis
Chassis Description	Rear locking 5-Pin Power Jack (includes Ignition / Car PC function) Input is 9V - 48V DC Power Mode: AT & ATX
Power Input	Includes External AC Adapter, Input 100~240V AC @ 1.4A 50-60Hz Power Protection: OVP (Over Voltage Protection), OCP (Over Current Protection) & Reverse Protection
Included with System	North American Power Cord 100-240V AC Adapter, 4.75ft cable exit length 4 x USB 3.2 Gen 2 Ports 4 x RS232 COM ports
Rear Panel	2x Gigabit RJ45 Network connection 8x DIO (Digital input/output) with Isolation 1x DVI-I video connector 2x DisplayPort video connectors 9 - 48V DC Connector

Front Panel	2 x Removable SSD Bays 2 x SIM Communications Slots (4G / LTE) 2 x Universal Bays (various I/O Options) 2 x USB 3.2 Gen 1 Ports 2 x USB 3.2 Gen 2 Ports Car Mode Delay Time Setting Switch PC/Car Mode Select Switch Headphone/Audio Line-Out Jack Microphone Input Jack AT / ATX Switch Power-on button
Dimensions	19.0"(W) x 13.94"(D) x 3.468"(H) (482.6 x 354 x 88 mm) Operating Temperature: 0 - 40C (32 to 104 F)
Environmental	Relative Humidity: 10% ~ 95%, non-condensing (Operating & Non-Operating) Shock: 50G, half sine, 11ms (with SSD) Vibration: 5 Grms, 5 - 500 Hz, 0.5 hr/axis (with SSD) UL 62368-1 and CSA C22.2 No. 62368-1:19
Approvals	RoHS CE FCC
Weight	Note: add 2.8 lbs / 1.25 kg for the AC Adapter Unit Weight: 18.5 lbs / 8.4 kg (Depending on configuration)
Warranty	2 Year limited Warranty, Standard 1 Year Extended Warranty available (see Configurator/Price List)
Disclaimer	Note: Specifications are subject to change without notice.