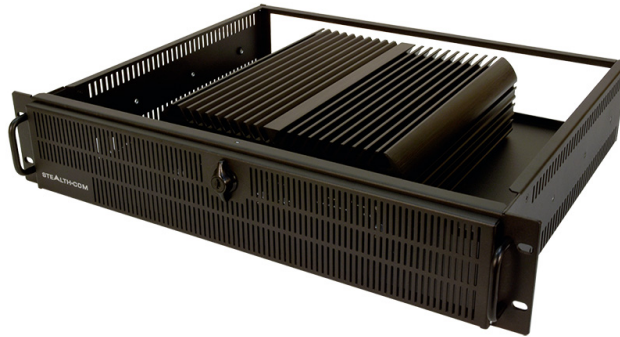


## SR-2875 - POWERFUL FANLESS 2U RACKMOUNT SERVER/PC (WIDE RANGE TEMPERATURE)



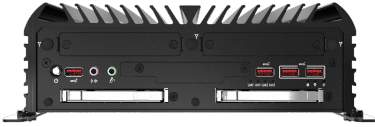
**\$3,365.00 USD**

### ***Powerful & Versatile Fanless Rack PC***

- Fanless, Noise Free Computing
- Space Saving 2U, 3.5" Rack Server/PC
- Powerful Intel's® 10th Generation Core i5, i7, i9 & Xeon mobile processors
  - 8x DIO (Digital input/output) ports
  - Dual Removable Front Drives
- Wide Operating Temp (-25°C to 70°C / -13°F to 158°F)
  - Wide Range 9-48 VDC Input, ideal for mobile/field
- Built-in Gigabit LAN, USB 3.2, Audio, Serial, Video (DVI-I & Displayport)
  - 4K Resolution, Ultra HD, Triple Display support
  - Single/Dual channel CAN Bus (Optional)
  - Solid State Drives (SSD) Standard
    - Windows 10, 11 and Linux
    - UL, CE, FCC & RoHS Certified
  - See our FAQ - Why Choose Fanless?
- Small Form Factor model version also available



## GALLERY IMAGES



## PRODUCT DESCRIPTION

The Stealth model SR-2875 is a wide temperature powerful fanless 2U Rackmount Server/PC that is easily integrated into standard 19" rack cabinets or used as standalone workstations. It is our latest in innovative Fanless 2U Rackmount Computers/Servers.

The SR-2875 is designed for high performance and is well equipped with Intel's® 10th Generation Core i5, i7, i9 and Xeon mobile processors. It supports operation in temperatures ranging from -25°C – 70°C. Up to 64GB of ECC and non-ECC DDR4 RAM is supported, along with capacity of up to 6TB in solid state drives (SSD) when equipped with 3 drives.

The SR-2875 rack mount computer includes two Removable Front Drive Bays, providing easy drive swapping and optional RAID configurations. The powerful small form factor pc also includes an abundance of I/O ports such as USB 3.2 ports, RS232 COM ports, Gigabit networking, external SIM card sockets for wireless connectivity and audio/video ports.

Stealth's SR-2875 rack pc is designed to handle 4K Ultra HD Resolution video and can support up to three connected displays via DisplayPort and DVI-I video ports. The SR-2875 also features 8x DIO (Digital input/output) with Isolation, offering the advantage of providing electrical isolation of digital signals.

Stealth developed the SR-2875 to be more than just your average server. It is engineered to be extremely mobile application friendly with the inclusion of Wide Range 9-48 VDC power input and to protect the system power is regulated with OVP (Over Voltage Protection), OCP (Over Current Protection) & Reverse Protection.

The SR-2875 is UL, CE, FCC & RoHS certified, and designed for use in a multitude of applications including; Audio/Video recording, Embedded Control, Digital Signs, Interactive Kiosks, Thin-Clients, and Human/Machine Interface.

**ADDITIONAL INFORMATION**

<b>Processor</b>	Supporting Intel® Core™ 10th Generation Processors Intel® Core™ i5-10500TE (6 Cores / 12 Threads, up to 3.7Ghz) Intel® Core™ i7-10700TE (8 Cores / 16 Threads, up to 4.4Ghz) Intel® Core™ i9-10900TE (10 Cores / 20 Threads, up to 4.5Ghz) Intel® Xeon® W-1290TE (10 Cores / 20 Threads, up to 4.50Ghz)
<b>BIOS</b>	AMI 256Mbit SPI BIOS
<b>Chipset</b>	Intel® W480E Chipset
<b>Memory</b>	2x DDR4 Memory Sockets Supporting up to 64GB of RAM / Memory Optional ECC Memory Support (available for Xeon CPUs only)
<b>Internal Storage</b>	256GB TLC SSD (Solid State Drive) Wide Temp standard (SATA) Up to 3 x 2.5" SSD supported total (1 x internal, 2 x removable) Optional Onboard RAID configurations (0, 1, 5), requires multiple drives Options of up to 2TB SSD internal storage.
<b>Internal Expansion Option</b>	2 Internal full sized Mini-PCIe expansion slots
<b>Video</b>	Intel® UHD Graphics 630 Includes DVI-I & 2x DisplayPort video ports Supports 4K Ultra HD Resolution as well as 1080p HD Video Triple Display support with DisplayPort and DVI-I Max Resolution, DisplayPort Mode: 4096x2304 @ 60Hz, DVI Mode: 1920 x 1200 @ 60Hz
<b>Networking</b>	LAN1: Intel I219, LAN2: Intel I210 Optional 2/4 x 10G Network connections on Front Panel Optional 4/8 x 10/100/1000 RJ45 POE Network connections on Front Panel 2 onboard Gigabit Ethernet controllers, RJ-45 interface, PXE and WOL Supported Optional 802.11 b/g/n/ac Dual Band (2.4Ghz / 5Ghz) Wireless Networking and Bluetooth 4.0, Realtek® RTL8821AE via internal Mini-PCIe

	2x External SIM card sockets standard for 4G wireless connectivity Optional 2x External SIM card sockets in Front Bay for 5G wireless connectivity
<b>Communications</b>	4x RS232/422/485 COM ports (standard) Additional 2/4 RS232 COM ports on Front Panel (optional) Optional 4/8 x USB 3.0 Ports on Front Panel Single/Dual channel CAN Bus (optional)
<b>Audio</b>	Integrated Realtek High Definition Audio CODEC ALC888S
	Windows Server 2022 Windows 11 (64-bit) Windows 10 (64-bit) Ubuntu Linux
<b>Operating Systems</b>	Please contact us directly for any special requirements
<b>TPM Module</b>	TPM 2.0 (Trusted Platform Module), provides increased hardware security.
<b>WatchDog Timer</b>	1 ~ 255 sec/min System Reset
<b>Hardware Monitor</b>	Processor temperature Voltage
	2U, 3.5" High, 19" EIA rackmount Solid Steel Chassis, Black Color Locking / Latching Secure Front door Fanless Rugged Aluminum Chassis Rear locking 5-Pin Power Jack (includes Ignition / Car PC function) Input is 9V - 48V DC Power Mode: AT & ATX
<b>Chassis Description</b>	
<b>Power Input</b>	Includes External AC Adapter, Input 100~240V AC @ 1.4A 50-60Hz Power Protection: OVP (Over Voltage Protection), OCP (Over Current Protection) & Reverse Protection
<b>Included with System</b>	North American Power Cord 100-240V AC Adapter, 4.75ft cable exit length

<b>Options</b>	5G wireless connectivity w/ 2x External SIM card sockets in Front Bay 2/4x 10Gb Ports on Front Panel 4/8x 10/100/1000 RJ45 POE Network connections on Front Panel 4/8x USB 3.0 Ports on Front Panel 802.11 b/g/n/ac Dual Band (2.4Ghz / 5Ghz) WiFi and Bluetooth, Intel® AC7260 via internal Mini-PCIe External USB DVD+-RW/CD-RW Drive 4 x USB 3.2 Gen 2 Ports 4 x RS232 COM ports
<b>Rear Panel</b>	2x Gigabit RJ45 Network connection 8x DIO (Digital input/output) with Isolation 1x DVI-I video connector 2x DisplayPort video connectors 9 - 48V DC Connector 2 x Removable SSD Bays 2 x SIM Communications Slots (4G / LTE) 2 x Universal Bays (various I/O Options) 2 x USB 3.2 Gen 1 Ports 2 x USB 3.2 Gen 2 Ports
<b>Front Panel</b>	Car Mode Delay Time Setting Switch PC/Car Mode Select Switch Headphone/Audio Line-Out Jack Microphone Input Jack AT / ATX Switch Power-on button
<b>Dimensions</b>	19.0"(W) x 13.94"(D) x 3.468"(H) (482.6 x 354 x 88 mm) Operating Temperature: -25 to 70C (-13 to 158 F)
<b>Environmental</b>	Relative Humidity: 10% ~ 95%, non-condensing (Operating & Non-Operating) Shock: 50G, half sine, 11ms (with SSD) Vibration: 5 Grms, 5 - 500 Hz, 0.5 hr/axis (with SSD) UL 62368-1 and CSA C22.2 No. 62368-1:19
<b>Approvals</b>	RoHS CE FCC
<b>Weight</b>	Note: add 2.8 lbs / 1.25 kg for the AC Adapter Unit Weight: 18.5 lbs / 8.4 kg (Depending on configuration)
<b>Warranty</b>	2 Year limited Warranty, Standard 1 Year Extended Warranty available (see Configurator/Price List)

## Disclaimer

Note: Specifications are subject to change without notice.