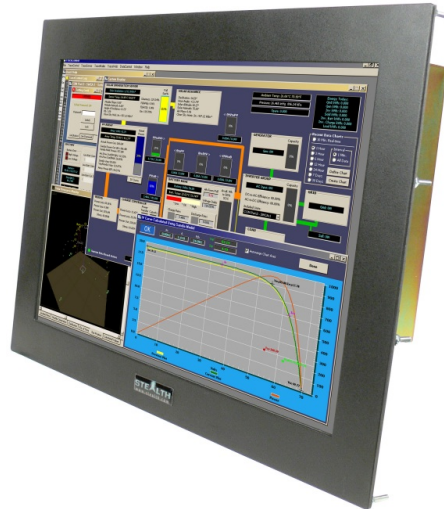


24" PANEL MOUNT LCD MONITOR (SV-2400NL-PM)



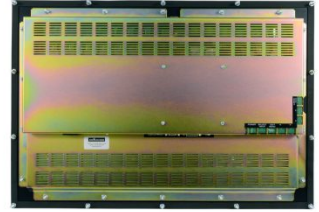
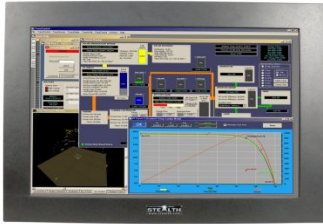
Model: SV-2400NL-PM

- Panel Mount 24" Widescreen LCD Monitor
 - NEMA 4/IP65 Environmentally Sealed
- Touch Screen Standard (Capacitive or Resistive)
 - 16:10 Aspect Ratio
 - 1920 x 1200 Maximum Resolution
- 250 Nits of Brightness, Adjustable Controls
- VGA, DVI-D, Displayport & HDMI connectors
 - Wide Viewing Angles, 178°
- Stainless Steel & Custom painted bezel options
 - cULus Listed
 - 2 Year Warranty

(Important Notice: The SV-2400NL-PM model is now end of life and is replaced by the functional equivalent model SV-2410W-PM.)



GALLERY IMAGES



PRODUCT DESCRIPTION

Stealth's 24" Panel Mount LCD monitor features a widescreen 16:10 high resolution display that easily integrates into your enclosure, cabinet, console, wall, kiosks or other industrial applications. Mounting the display is accomplished by simply securing the rear metal studs into your application cutout.

All Stealth Panel Mount LCD products come standard with an environmentally sealed NEMA 4, 4X, 12, IP65 front panel that is resistant to dust/dirt penetration or even liquid splashes. The rugged SV-2400NL-PM LCD is available with a capacitive or resistive touchscreen, protective anti-glare, Anti-Reflective protective glass or without a front overlay whatsoever.



Prior to shipping, each and every display is put through Stealth's rigorous QA burn-in procedure that is documented and controlled through our ISO 9001 quality system and in compliance with being cULus Listed, UL 60950-1 & CAN/CSA C22.2 No. 60950-1-07.

Stealth offers a wide range of LCD product offerings that include Panel mount, Rack mount and Open Frame designs as standard off-the-shelf products in 6.5" up to 24" diagonal sizes. Our Rugged LCD products are constructed from solid steel and will meet the demands of your application without breaking your budget.

ADDITIONAL INFORMATION

Bezel Type	Panel Mount
Screen Size	24.0" (Diagonal)
Aspect Ratio	16:10
Native Resolution	1920 x 1200 (Auto sync from 640 x 480 to 1920 x 1200)
Horizontal Frequency	31.5 kHz ~ 77 kHz
Vertical Frequency	56 Hz ~ 60 Hz
Pixel Pitch	0.27mm x 0.27mm
Response Time	5ms Typical
Type	LCD c/w LED Backlighting
Video Input Connectors	VGA / HD-15 DVI Compliant Digital HDCP (DVI-D) HDMI Displayport
Viewing Angle	178° / 178° (H / V) - (Viewing angle of LCD panel sans touch)
Contrast Ratio	1000:1 (typical)
Luminance (Brightness)	250 cd/m2 typical at center (250 Nits)
Viewable Image Size	Horizontal: 20.4" / 518.2 mm, Vertical: 12.8" / 325.1 mm
Video Signal	ANALOG: 0.7 Vp-p/75 Ohms
Sync Signal	Separate Sync Sync on Green Composite Sync
Input	AC Input: 120 - 240VAC ~ 60/50 Hz Power Consumption: 29 W (typical)
Control Buttons (Rear mounted)	Left (-), Right (+), Up, Down, Auto Adjustment, Brightness Hot key, OK, Power ON/OFF
Controls On-Screen Display	Brightness, Contrast, Auto Adjust, Image Position, Image Adjust, Color Adjust, Display Mode, Language Select, OSM Lockout, OSM Time-out

Environmental Rating	Standard Bezel: NEMA 4 / IP65 Front Panel (when properly installed) protection against windblown dust and rain, splashing water, and hose-directed water
Environmental	Operating Temperature: 0 - 40C (32 to 104 F) Storage Temperature: -20~60C (-4~140F) Operating: Humidity 20% ~ 80%, non-condensing Storage Humidity: 5% to 95%, non-condensing
Approvals	cULus Listed, UL 60950-1 & CAN/CSA C22.2 No. 60950-1-07
Panel Finish	Black Baked Enamel (Standard)
Unit Weight	20 Pounds (9.07Kg)
Dimensions	Panel Mount: 24.5"(W) x 16.75"(H) x 2.8"(D) 622.3mm x 425.5mm x 71.1mm SV-2400NL-PM-CT-SERIAL - Capacitive Touch with Serial/DB9 Interface SV-2400NL-PM-CT-USB - Capacitive Touch Screen with USB interface SV-2400NL-PM-RT - Resistive Touch with Serial/DB9 and USB Interface
Available Models	
Warranty	2 Year Parts & Labor 1 Year Extended Warranty available (see Configurator/Price List)
Disclaimer	Note: Specifications are subject to change without notice.