

21.5" PANEL MOUNT LCD MONITOR (SV-2150WS-PM - DISCONTINUED)



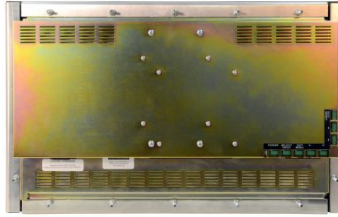
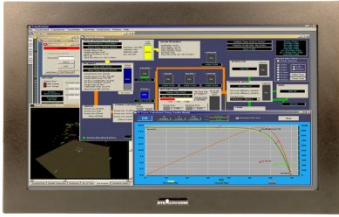
Model: SV-2150WS-PM

- Panel Mount 21.5" Widescreen LCD Monitor
- NEMA 4/4X / IP66 Environmentally Sealed
 - Touch Screen Standard (Resistive)
 - 16:9 Aspect Ratio
 - 1920 x 1080 Maximum Resolution
- 250 Nits of Brightness, Adjustable Controls
- VGA, DVI-D, Displayport & HDMI connectors
 - Wide Viewing Angles, 178°
- Stainless Steel & Custom painted bezel options
- Turn this display into a PanelPC with mountable & removable LittlePC
 - cULus Listed
 - 3 Year Warranty

(Important Notice: The SV-2150WS-PM model is now end of life and is replaced by the model SVZ-2150W.)



GALLERY IMAGES



PRODUCT DESCRIPTION

Stealth's 21.5" Panel Mount LCD features a widescreen display and is easily integrated into your enclosure, cabinet, console, wall, kiosks or other industrial applications. Simply refer to the Panel Mount cutout drawing and cut a hole to the size indicated. Drop the LCD in place and secure the brackets for each side. No stud mount holes are required for this LCD monitor.

Stealth's Panel Mount Display comes standard with an environmentally sealed NEMA 4, 4X, IP66 front panel that is resistant to dust/dirt penetration or even liquid splashes. The rugged SV-2150WS-PM LCD display comes equipped with resistive touchscreen standard.



Prior to shipping, each and every display is put through Stealth's rigorous QA burn-in procedure that is documented and controlled through our ISO 9001 quality system and in compliance with being cULus Listed, UL 60950-1 & CAN/CSA C22.2 No. 60950-1-07.

Stealth offers a wide range of LCD product offerings that include Panel mount, Rack mount and Open Frame designs as standard off-the-shelf products in 8.4" up to 24" diagonal sizes. Our LCD products are constructed from solid steel and will meet the demands of your application without breaking your budget.

ADDITIONAL INFORMATION

Bezel Type	Panel Mount
Screen Size	21.5" (Diagonal)
Aspect Ratio	16:9
Native Resolution	1920 x 1080 (Auto sync from 640 x 480 to 1920 x 1080)
Horizontal Frequency	31.5 kHz ~ 83 kHz
Vertical Frequency	56 Hz ~ 75 Hz
Pixel Pitch	0.25mm x 0.25mm
Response Time	6ms Typical
Type	IPS LCD Panel c/w LED Backlighting
Video Input Connectors	VGA / HD-15 DVI Compliant Digital HDCP (DVI-D) HDMI Displayport
Viewing Angle	178° / 178° (H / V) - (Viewing angle of LCD panel sans touch)
Contrast Ratio	1000:1 (typical) 25000:1 (dynamic)
Luminance (Brightness)	250 cd/m2 typical at center (250 Nits)
Viewable Image Size	Horizontal: 18.85" / 478.79 mm, Vertical: 10.68" / 271.27 mm
Video Signal	ANALOG: 0.7 Vp-p/75 Ohms
Sync Signal	Separate Sync: TTL Level (Positive/Negative) Composite Sync on Green: (0.3Vp-p negative 0.7Vp-p positive) Composite Sync: TTL Level (Positive/Negative)
Environmental Rating	Standard Bezel: NEMA 4/4X / IP66 Front Panel (when properly installed) protection against windblown dust and rain, splashing water, and hose-directed water Optional Stainless Steel Bezel: NEMA 4X / IP66 Front Panel (when properly installed) corrosion protection, protection against windblown dust and rain, splashing water, and hose-directed water

Environmental	Operating Temperature: 0 - 40C (32 to 104 F) Storage Temperature: -10 - 60C (14 to 140 F) Operating: Humidity 20% ~ 80%, non-condensing Storage Humidity: 10% to 85%, non-condensing
Approvals	cULus Listed, UL 60950-1 & CAN/CSA C22.2 No. 60950-1-07
Input	AC Input: 100 - 240VAC ~ 50-60Hz, 1.3A
Control Buttons (Rear mounted)	Left (-), Right (+), Up, Down, Menu/Exit Reset/Eco, Input/Select, Power ON/OFF
Controls On-Screen Display	Brightness, Contrast, Auto Adjust, Image Position, Image Adjust, Color Adjust, Display Mode, Language Select, OSM Lockout, OSM Time-out
Panel Finish	Black Baked Enamel (Standard) Stainless Steel - Brushed #304 (Optional)
Unit Weight	17.0 Lbs (7.71 KG)
Dimensions	Panel Mount: 21.95"(W) x 13.8"(H) x 2.8"(D) 557.53mm x 350.52mm x 71.1mm
Available Models	SV-2150WS-PM-RT - Standard Bezel (NEMA 4), Resistive Touch with Serial/DB9 and USB Interface SV-2150WS-PM-RT-SS - Stainless Steel Bezel (NEMA 4X), Resistive Touch with USB & Serial/DB9 Interfaces
Warranty	3 Year Parts and Labor
Disclaimer	Note: Specifications are subject to change without notice.