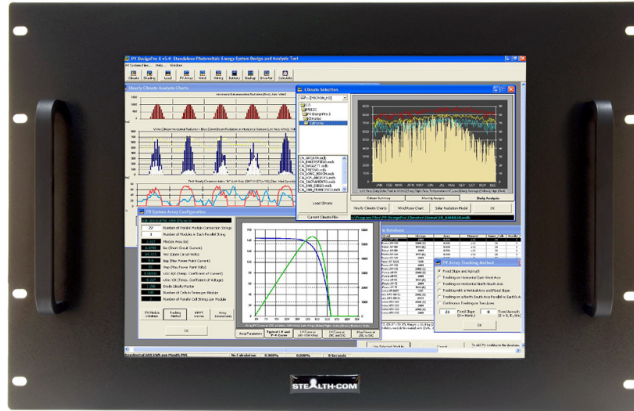


15" RACK MOUNT LCD MONITOR



Model: SV-1501-RM

- Rack Mount LCD, 15" Industrial Grade
- Installs in standard 19" rack cabinets
- NEMA 4/IP65 Environmentally Sealed
- Resistive Touch Screen Standard c/w USB and Serial Connections
 - Optional Capacitive Touchscreen
 - Wide Viewing Angles
 - VGA & DVI-D video connectors
 - 2 Year Warranty

(Important Notice: The SV-1501-RM model is now end of life and is replaced by the functional equivalent model SV-1510-RM.)



GALLERY IMAGES



PRODUCT DESCRIPTION

Stealth builds high quality LCD monitors suited for industrial and commercial applications. Our 15" Rack Mount LCD is easily installed into industry standard 19" EIA rack cabinets and enclosures in minutes. Our rack mountable LCD products are built with an environmentally sealed NEMA 4 / IP65 front panel that is resistant to dust/dirt penetration or even liquid splashes. The SV-1501-RM panel mount lcd comes equipped with Resistive Touch Screen standard and Capacitive touch screen is also available as an option.

Stealth offers a range of LCD product offerings including Panel mount, Rack mount and Open Frame designs as standard off-the-shelf products in 6.5" up to 26" diagonal sizes. Our LCD products are constructed from solid steel and will meet the demands of your application without breaking your budget.

ADDITIONAL INFORMATION

Bezel Type	Rack Mount
Screen Size	15.0" (Diagonal)
Aspect Ratio	4:3
Native Resolution	1024 x 768 (Auto sync from 640 x 480 to 1024 x 768)
Horizontal Frequency	57.3 KHz - 70 KHz, 67.5KHz typical
Vertical Frequency	57 Hz - 63 Hz, 60Hz typical (NTSC)
Pixel Pitch	0.297mm x 0.297mm
Response Time	5.7ms
Type	CCFL backlight Backlighting Life: 40,000 Hr Typical
Video Input Connectors	VGA / HD-15 DVI Compliant Digital HDCP (DVI-D)
Viewing Angle	140° / 125° (H / V) - (Viewing angle of LCD panel without touch)
Contrast Ratio	700:1 (typical)
Luminance (Brightness)	250 cd/m2 typical at center (250 Nits)
Viewable Image Size	Horizontal: 11.97" / 304.128 mm, Vertical: 8.98" / 228.096 mm
Input	12VDC input at LCD, Rear mounted AC power supply included, 100 - 240VAC (removable) Power Consumption: <45W (typical)
Control Buttons (Rear mounted)	Power Switch, Menu Key, Select (+, -), Auto
Controls On-Screen Display	Brightness, Contrast, Auto Adjust, Image Position, Image Adjust, Color Adjust, Display Mode, Language Select, OSM Lockout, OSM Time-out
Environmental Rating	Standard Bezel: NEMA 4 / IP65 Front Panel (when properly installed) protection against windblown dust and rain, splashing water, and hose-directed water

Environmental

Operating Temperature: 0~50C (32~122F)
Storage Temperature: 0~60C (32~140F)
Relative Humidity: 10% ~ 90% non-condensing (Operating & Non-Operating)

Panel Finish

Black Baked Enamel (Standard)

Unit Weight

Unit Weight: 12 Lbs (5.4kg)

Dimensions

Rack Mount: 19.0"(W) x 12.22"(H) x 3.19"(D)* (482.6mm x 310.38mm x 81.0mm*)

(* remove 1.26" or 32mm from Depth for Removable Power Supply)

Available Models

SV-1501-RM-RT - Resistive Touch with Serial/DB9 and USB Interface

SV-1501-RM-CT-SERIAL - Capacitive Touch with Serial/DB9 Interface

SV-1501-RM-CT-USB - Capacitive Touch Screen with USB interface

Warranty

2 Year Parts & Labor

Disclaimer

Note: Specifications are subject to change without notice.