

17" RACK MOUNT LCD MONITOR (SV-1705-RM)



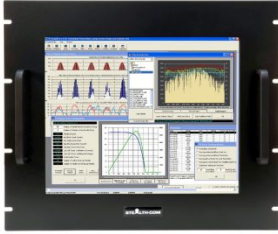
\$1,950.00 USD

Model: SV-1705-RM

- Rack Mount LCD 17" Industrial Grade
- Installs in standard 19" rack cabinets
- Optional Resistive Touch Screen c/w USB and Serial Connections
 - Wide Viewing Angles
- 250 Nits of Brightness, Adjustable Controls
- DVI-I, HDMI & DisplayPort video connectors
- UL 62368-1:2019 Ed.3 & CAN/CSA C22.2#62368-1:2019 Ed.3 Listed
 - FCC, CE, RoHS Compliant
 - 3 Year Warranty



GALLERY IMAGES



PRODUCT DESCRIPTION

Stealth builds high quality Rackmount LCD displays suited for industrial and commercial applications. Our 17" Rack Mount LCD is easily installed into industry standard 19" EIA rack cabinets and enclosures in minutes.

All of our Rugged LCDs are available with a Resistive Touchscreen. The Rack Mount version can also be supplied with no Touchscreen included. In this case the LCD is exposed. Our displays have wide viewing angles, 350 Nits of Brightness with adjustable controls and comes standard with a 3 Year warranty with extended warranty options available.

Prior to shipping, each and every display is put through Stealth's rigorous QA burn-in procedure that is documented and controlled through our ISO 9001 quality system and in compliance with being CE, FCC, *UL 62368-1:2019 Ed.3* & *CSA C22.2#62368-1:2019 Ed.*

Stealth offers a range of LCD product offerings including Panel mount, Rack mount and Open Frame designs as standard off-the-shelf products in 15" up to 26" diagonal sizes. Our LCD products are constructed from solid steel and will meet the demands of your application without breaking your budget.

ADDITIONAL INFORMATION

Bezel Type	Rack Mount
Screen Size	17.0" (Diagonal)
Aspect Ratio	5:4
Native Resolution	1280 x 1024 (Auto sync from 640 x 480 to 1280 x 1024)
Horizontal Frequency	42.9 ~ 58.8KHz (48.363 KHz typical)
Vertical Frequency	55 - 70Hz (60Hz typical)
Pixel Pitch	0.264mm x 0.264mm
Response Time	20ms Rise (Typical), 10ms Fall (Typical)
Type	TFT Active Matrix Liquid Crystal
Video Input Connectors	DVI-I c/w DVI to VGA Adapter HDMI Displayport
Viewing Angle	80°/80°/60°/80° (Typical)
Contrast Ratio	800:1 (typical)
Luminance (Brightness)	350 cd/m2 typical at center (350 Nits)
Viewable Image Size	Horizontal: 13.30" / 337.92 mm, Vertical: 10.64" / 270.336 mm
Input	90 ~ 264V AC, 47~63Hz External Power Supply (rear mounted) DC Input: 9V - 36V DC DC Input: 43V - 160V DC DC Input: 180V - 300V DC AC Adapter is Removable
Control Buttons (Rear mounted)	Power, Left, Right, Menu

Controls On-Screen Display	Brightness Color Image Adjust Input Source OSD Lockout Sound (not applicable) Tools
Environmental Rating	N/A - not rated
Environmental	Operating Temperature: -10C - +60C (14F - 140F) Storage Temperature: -30C - +85C (-22F - +185F) Operating: Relative Humidity 20% ~ 80% Storage Relative Humidity: 20% ~ 80%
Panel Finish	Black Baked Enamel (Standard)
Unit Weight	Unit Weight: 14.9 Lbs (6.76 Kg)* * Weight may vary depending on configuration
Dimensions	Add 1.33" (33.78mm) to depth with rear mounted AC Adapter With Touch: 19.00" x 15.72" x 2.46" (482.6mm x 399.28mm x 62.48mm) [W x H x D] Without Touch: 19.00" x 15.72" x 2.22" (305.30mm x 310.38mm x 56.39mm) [W x H x D] Rack Mount: 19.0"(W) x 15.72"(H) x 2.5"(D) 482.6mm x 399.28mm x 63.68mm CSA C22.2#62368-1:2019 Ed.3 UL 62368-1:2019 Ed.3
Approvals	RoHS CE FCC
Cooling	Natural Convection (no fan)
Available Models	SV-1705-RM - Painted Bezel, No Touch / no protective glass, 9~36V DC Input, AC Adapter Included SV-1705-RM-160V - Painted Bezel, No Touch / no protective glass, 43~160V DC Input SV-1705-RM-300V - Painted Bezel, No Touch / no protective glass, 180~300V DC Input SV-1705-RM-RT - Painted Bezel, Resistive Touch (Serial/DB9 and USB), 9~36V DC Input, AC Adapter Included SV-1705-RM-RT-160V - Painted Bezel, Resistive Touch (Serial/DB9 and USB), 43~160V DC Input SV-1705-RM-RT-300V - Painted Bezel, Resistive Touch (Serial/DB9 and USB), 180~300V DC Input

Warranty

3 Year Parts and Labor

Disclaimer

Note: Specifications are subject to change without notice.