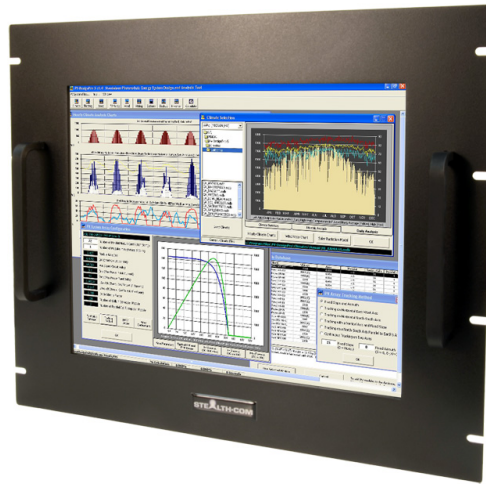


17" RACK MOUNT LCD MONITOR (SV-1701-RM - DISCONTINUED)



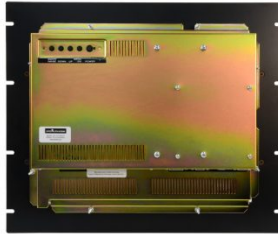
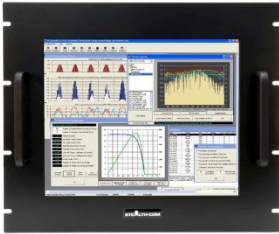
Model: SV-1701-RM

- Rack Mount LCD 17" Industrial Grade
- Installs in standard 19" rack cabinets
- Touch Screen Standard (Capacitive or Resistive)
 - Wide Viewing Angles
- 250 Nits of Brightness, Adjustable Controls
 - VGA & DVI-D video connectors
 - cULus Listed
 - 2 Year Warranty

(Important Notice: The SV-1701-RM model is now end of life and is replaced by the functional equivalent model SV-1705-RM.)



GALLERY IMAGES



PRODUCT DESCRIPTION

Stealth builds high quality Rackmount LCD displays suited for industrial and commercial applications. Our 17" Rack Mount LCD is easily installed into industry standard 19" EIA rack cabinets and enclosures in minutes.

All of our Rugged LCDs are available with various Touch Screen options including Resistive or Capacitive. Our displays have wide viewing angles, 250 Nits of Brightness with adjustable controls and comes standard with a 2 Year warranty with extended warranty options available.



Prior to shipping, each and every display is put through Stealth's rigorous QA burn-in procedure that is documented and controlled through our ISO 9001 quality system and in compliance with being cULus Listed, UL 60950-1 & CAN/CSA C22.2 No. 60950-1-07.

Stealth offers a range of LCD product offerings including Panel mount, Rack mount and Open Frame designs as standard off-the-shelf products in 8.4" up to 26" diagonal sizes. Our LCD products are constructed from solid steel and will meet the demands of your application without breaking your budget.

ADDITIONAL INFORMATION

Bezel Type	Rack Mount
Screen Size	17.0" (Diagonal)
Aspect Ratio	5:4
Native Resolution	1280 x 1024 (Auto sync from 640 x 480 to 1280 x 1024)
Horizontal Frequency	30 kHz ~ 83 kHz
Vertical Frequency	56 Hz ~ 75 Hz
Pixel Pitch	0.264mm x 0.264mm
Response Time	5ms Typical
Type	LCD c/w LED Backlighting
Video Input Connectors	VGA / HD-15 DVI Compliant Digital HDCP (DVI-D)
Viewing Angle	170° (H) / 160° (V) - (Viewing angle of LCD panel without touch)
Contrast Ratio	1000:1 (typical) SmartContrast: 20,000,000:1
Luminance (Brightness)	250 cd/m2 typical at center (250 Nits)
Viewable Image Size	Horizontal: 13.39" / 340.1 mm, Vertical: 10.71" / 272.03 mm
Video Signal	ANALOG: 0.7 Vp-p/75 Ohms
Sync Signal	Separate Sync Sync on Green
Input	AC Input: 100-240V, 50-60Hz, 1.5A
Control Buttons (Rear mounted)	Smart Image, Down, Up, Menu/OK, Power ON/OFF
Controls On-Screen Display	Brightness, Contrast, Auto Adjust, Image Position, Image Adjust, Color Adjust, Display Mode, Language Select, OSM Lockout, OSM Time-out
Environmental Rating	N/A - not rated

Environmental	Operating Temperature: 0 - 40C (32 to 104 F) Storage Temperature: -20~60C (-4~140F) Operating: Relative Humidity 20% ~ 80% Storage Relative Humidity: 20% ~ 80%
Approvals	cULus Listed, UL 60950-1 & CAN/CSA C22.2 No. 60950-1-07
Panel Finish	Black Baked Enamel (Standard)
Unit Weight	Unit Weight: 14.15 Lbs (6.42 Kg)* Shipping Weight: 20.30 Lbs (9.22 Kg)* * Weight may vary depending on configuration
Dimensions	Rack Mount: 19.0"(W) x 15.72"(H) x 2.5"(D) 482.6mm x 399.28mm x 63.68mm
Available Models	SV-1701-RM-RT - Standard Bezel (NEMA 4), Resistive Touch with Serial/DB9 and USB Interface SV-1701-RM-CT-SERIAL - Standard Bezel (NEMA 4), Capacitive Touch with Serial/DB9 Interface SV-1701-RM-CT-USB - Standard Bezel (NEMA 4), Capacitive Touch Screen with USB interface
Warranty	2 Year Parts & Labor 1 Year Extended Warranty available (see Configurator/Price List)
Disclaimer	Note: Specifications are subject to change without notice.